

Human HLA-A*02:01&B2M&P53 R175H (HMTEVVRHC) Monomer Protein



Cat. No. MHC-HM415

Description

Source	Recombinant Human HLA-A*02:01&B2M&P53 R175H (HMTEVVRHC) Monomer Protein is expressed from HEK293 with His tag and Avi tag at the C-Terminus. It contains Gly25-Thr305(HLA-A*02:01),Ile21-Met119(B2M) and HMTEVVRHC peptide.
Accession	A0A140T913(HLA-A*02:01)&P61769(B2M)& HMTEVVRHC
Molecular Weight	The protein has a predicted MW of 50.5 kDa. Due to glycosylation, the protein migrates to 51-60 kDa based on Tris-Bis PAGE result.
Endotoxin	Less than 1EU per µg by the LAL method.
Purity	> 95% as determined by Tris-Bis PAGE > 95% as determined by HPLC

Formulation and Storage

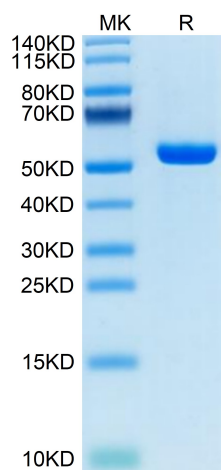
Formulation	Lyophilized from 0.22µm filtered solution in PBS, 100mM L-arginine (pH 7.4). Normally 8% trehalose is added as protectant before lyophilization.
Reconstitution	Centrifuge the tube before opening. Reconstituting to a concentration more than 100 µg/ml is recommended. Dissolve the lyophilized protein in distilled water.
Storage	-20 to -80°C for 12 months as supplied from date of receipt. -20 to -80°C for 3-6 months in unopened state after reconstitution. 2-8°C for 2-7 days after reconstitution. Recommend to aliquot the protein into smaller quantities for optimal storage. Please minimize freeze-thaw cycles.

Background

p53 is a tumor suppressor protein. Under stressful conditions, p53 tightly regulates cell growth by promoting apoptosis and DNA repair. When p53 becomes mutated, it loses its function, resulting in abnormal cell proliferation and tumor progression. Depending on the p53 mutation, it has been shown to form aggregates leading to negative gain of function of the protein.p53 mutant associated aggregation has been observed in several cancer tissues and has been shown to promote tumor growth.

Assay Data

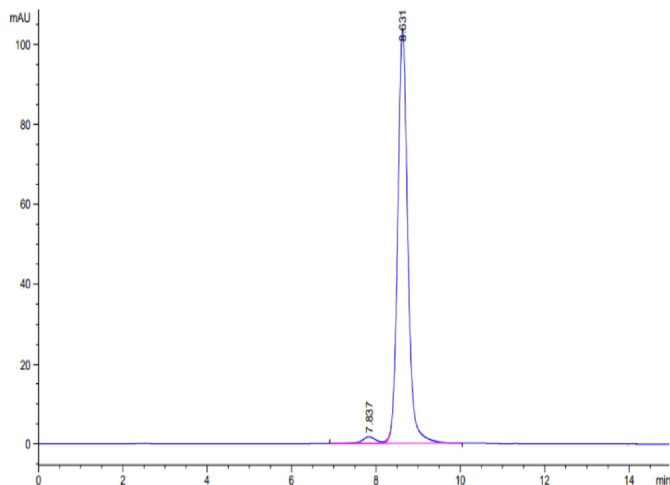
Tris-Bis PAGE



Human HLA-A*02:01&B2M&P53 R175H (HMTEVVRHC) Monomer on Tris-Bis PAGE under reduced condition. The purity is greater than 95%.

SEC-HPLC

Assay Data

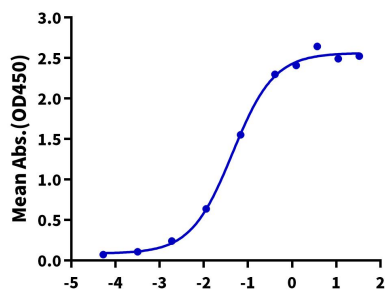


The purity of Human HLA-A*02:01&B2M&P53 R175H (HMTEVVRHC) Monomer is greater than 95% as determined by SEC-HPLC.

ELISA Data

Human HLA-A*02:01&B2M&P53 R175H Monomer, His Tag ELISA

0.1µg Anti-HLA-A*02:01&B2M&P53 R175H Antibody, hFc Tag Per Well



Immobilized Anti-HLA-A*02:01&B2M&P53 R175H (HMTEVVRHC) Antibody, hFc Tag at 1µg/ml (100µl/well) on the plate. Dose response curve for Human HLA-A*02:01&B2M&P53 R175H (HMTEVVRHC) Monomer, His Tag with the EC50 of 44.7ng/ml determined by ELISA.

Log Human HLA-A*02:01&B2M&P53 R175H Monomer, His Tag Conc.(µg/ml)